



---

# SPECIFICATION

---

 **iled**

**Silicone neon flex**

Ultra-slim size, flexible bending. changes into thousands of styles.

IP67 excellent weather resistance.



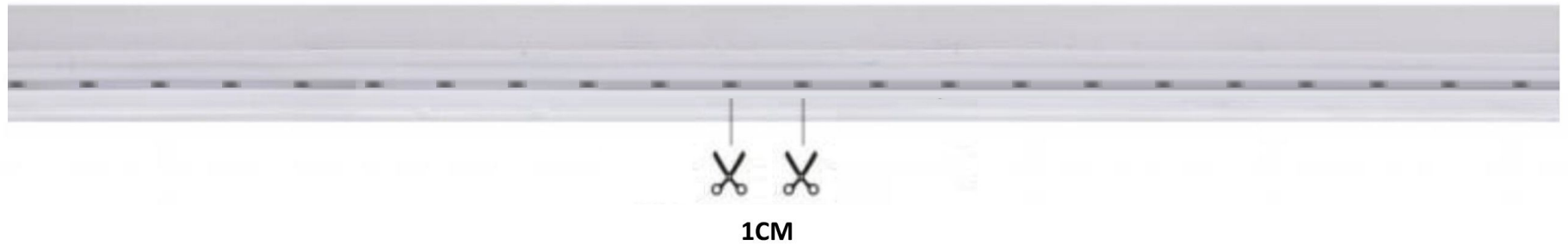


# Features:

- Light source: High luminous efficiency, SMD2835 LM80 proved.
- Process & Material: High light transmittance, food-grade environmental silicone material, integrated extrusion molding technology, IP67.
- Optical Design: Unique optical light distribution structure design, uniform lighting surface and no shadow.
- Appearance Design: Compared with the traditional neon tube or PVC guardrail tube, the silicone material has good flexibility, the simple and stylish appearance, which is exquisite and unique.
- Environmental Features: Resistance to saline solutions, acids & alkali, corrosive gases and UV.
- Working/Storage Temperature: Ta: -40~60°C / 0°C~60°C.

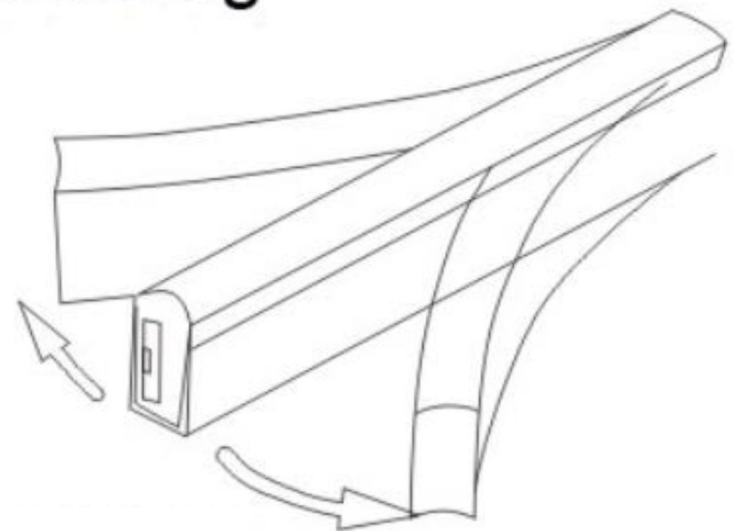
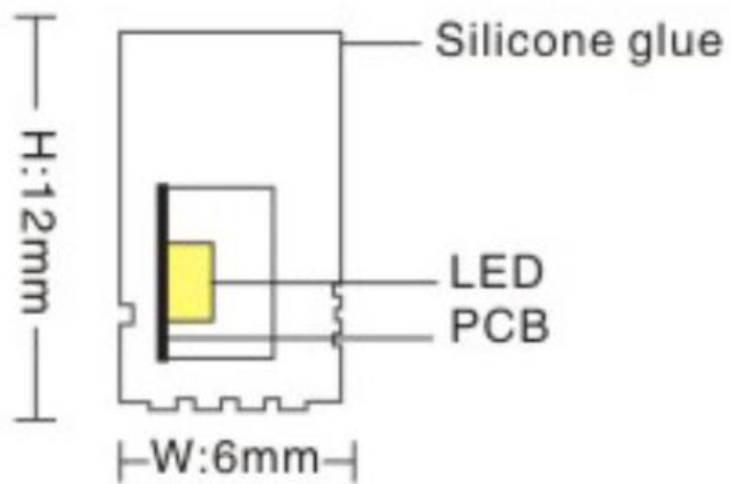


# Drawings



---

## Vertical bending



# Datasheet:

## 12V 6MM NEON LED - 1 CM KESİLEBİLİR

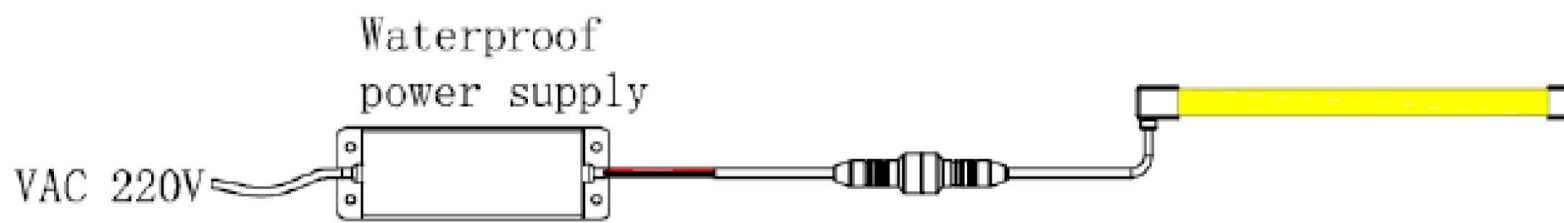
KOD Code	LED Adeti LED pcs.	LED Tipi LED Type	RENK Color	GERİLİM Voltage	GÜÇ Power	AKIM Current	IŞIK AKISI Luminous Flux	AÇI Angle	DALGA BOYU Wavelength/CCT	IP Sınıfı IP Rating
FNIL.R067.S612	100	2835 SMD	Kırmızı /RED	12V	9.5W	700 mA	140LM	120	620-610nm	IP67
FNIL.YG67.S612			Altın Sarısı/GOLD				400LM		1800-2000k	
FNIL.B067.S612			Mavi/BLUE				50LM		450-455nm	
FNIL.G067.S612			Yeşil/GREEN				350LM		510-515nm	
FNIL.3067.S612			3000K				450LM		2800-3000K	
FNIL.4067.S612			4000K				310LM		3800-4000K	
FNIL.6067.S612			6000K				450LM		5600K-6000K	
FNIL.1067.S612			10.000K				370LM		10000-30000K	
FNIL.O067.S612			Turuncu/ORANGE				200LM		600-610nm	
FNIL.YL67.S612			Limon Sarısı/LEMON				450LM		426-430nm	
FNIL.BI67.S612			Buz Mavisii/ICE BLUE				250LM		480-485nm	
FNIL.GM67.S612			Maldiv Yeşili/MALDIV GREEN				200LM		490-495nm	
FNIL.PU67.S612			Mor/PURPLE				50LM		400-435nm	
FNIL.P067.S612			Pembe/PINK				50LM		380-440nm	
FNIL.PL67.S612			Açık Pembe/LIGHT PINK				180LM		611nm	

### Note:

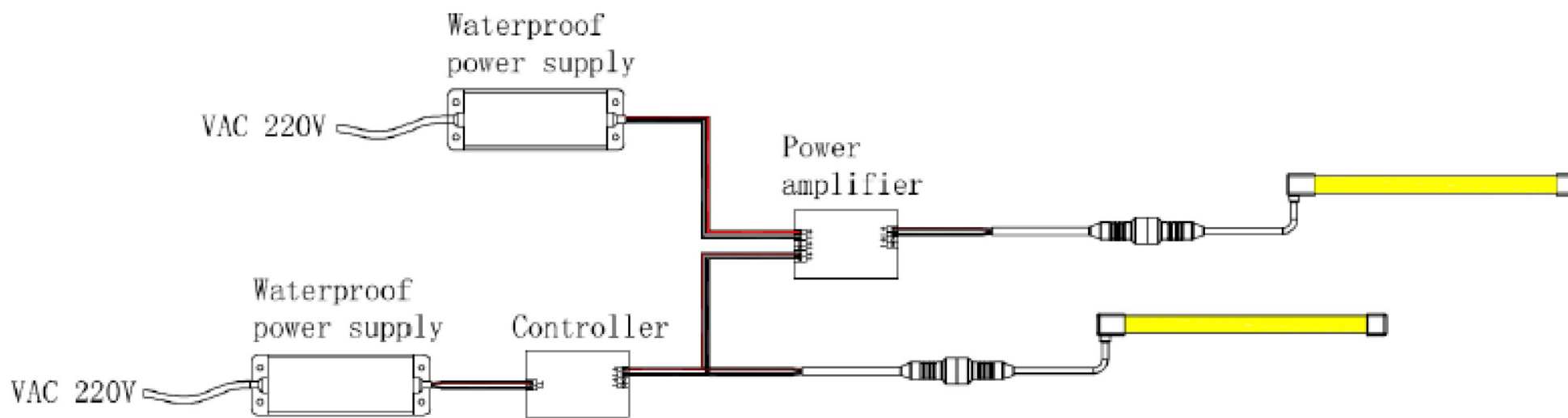
- 1、 The above data is the testing result of 1M standard product;
- 2、 The power and lumens of output data can be vary up to  $\pm 10\%$ ;
- 3、 The above parameters are all typical values;

## Wiring Diagram:

Non-dimming connection mode:

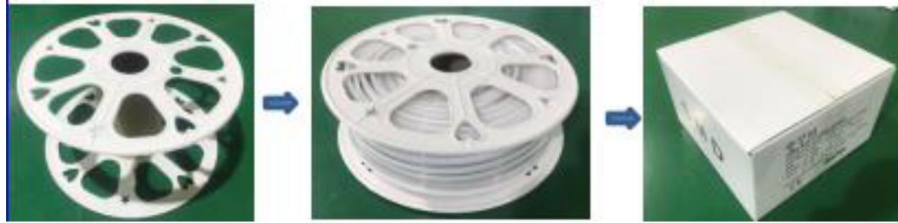


Dimming connection mode:





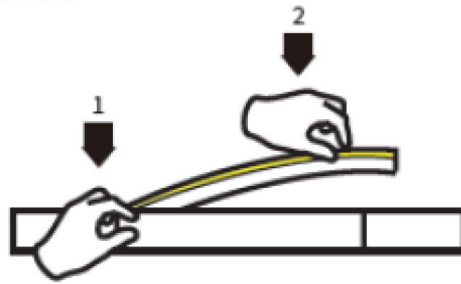
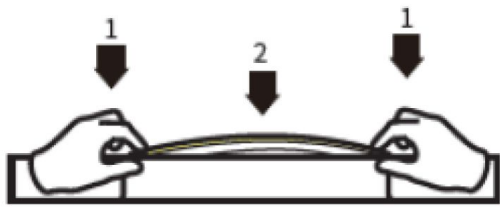
# Packaging Solutions:



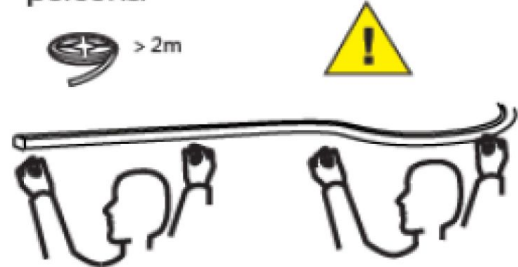
Model	Product Dimensions(mm)	Carton size(cm)	N.W.(kg)/PC	G.W.(kg)/PC	Meter/Pcs./CTN
FNIL.S612	6*12	33*33*11CM	4.3KG	3.5KG	50M/roll

# Installation of carrier

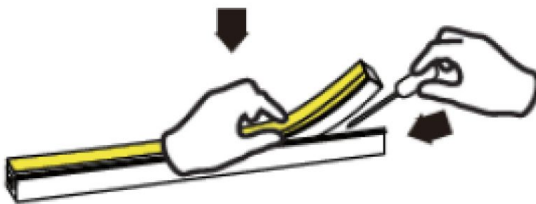
1. When installing the LED strip, install it from both ends at the same time, installation from one direction is prohibited.



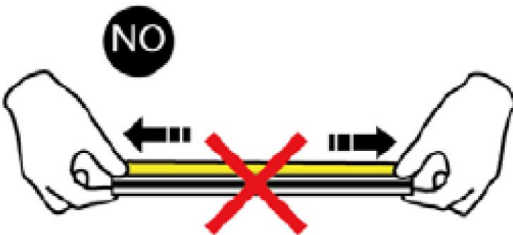
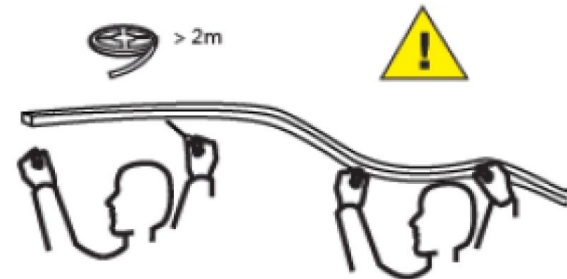
⚠ If the length of LED strip is over 2m, it is recommended to install by two persons.



2. Use tool to disassemble carefully, and do not pull the LED strip directly.



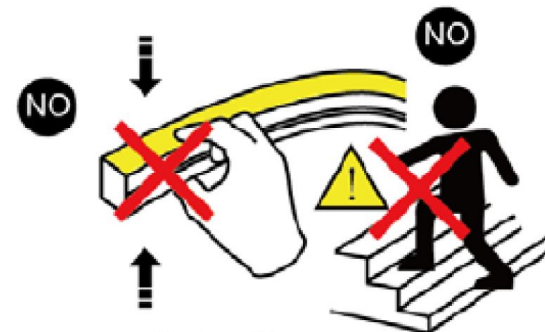
⚠ If the length of LED strip is over 2m, it is recommended to disassemble by two persons.



No stretching



No contorting



No trampling

## Precautions:

- Use a 12V isolated power supply to drive the neon lamp strip and the ripple wave of constant voltage source shall be less than 5%. It is not allowed to use RC voltage reduction or non-isolated power supply to drive the neon lamp strip.
- In actual applications, 20% of the power supply shall be kept (only 80% of the power is used) to guarantee that sufficient voltage is available to drive the product.
- Attention shall be paid to safe operation. After powering on, it is not allowed to touch the AC power supply to avoid an electric shock.
- Attention shall be paid to the positive and negative poles of the wires during installation and whether the power supply conforms to required voltages to avoid damages.
- Avoid scratching, distortion and irregular bending of the product during installation; otherwise it may cause irreparable damage to the product.
- Please do not bend the strip into an arc with a radius less than 60mm to ensure the longevity and reliability, the bending radius too small will damage the product itself.
- If the actual length of application exceeds the specified using length, it will lead to overload heating and uneven brightness.
- To keep the eyes from being harmed, try to avoid staring at the glowing side of the LED strip for a long time.
- Non-professionals are prohibited from installing, disassembling and repairing the product.
- Do not use any acid or alkaline adhesive to fix products (including not limited to glass cement, etc.)
- Product is not suitable for use in swimming pools and fountains.