



---

# SPECIFICATION

---

 **iled**

**Silicone neon flex**

Ultra-slim size, flexible bending. changes into thousands of styles.

IP67 excellent weather resistance.



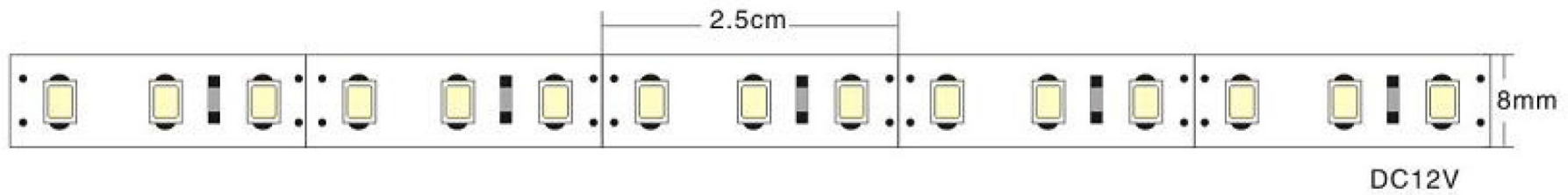


# Features:

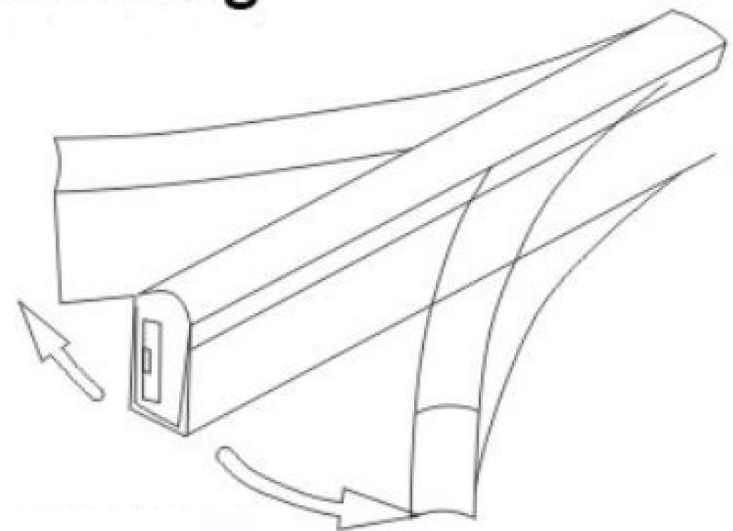
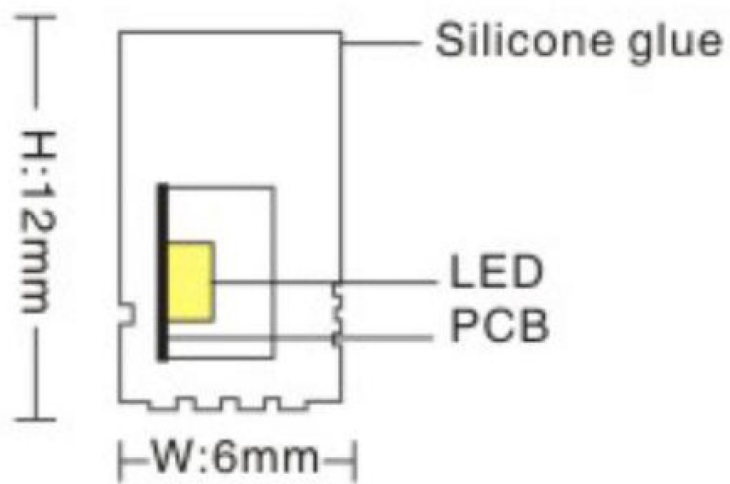
- Light source: High luminous efficiency, SMD2835 LM80 proved.
- Process & Material: High light transmittance, food-grade environmental silicone material, integrated extrusion molding technology, IP67.
- Optical Design: Unique optical light distribution structure design, uniform lighting surface and no shadow.
- Appearance Design: Compared with the traditional neon tube or PVC guardrail tube, the silicone material has good flexibility, the simple and stylish appearance, which is exquisite and unique.
- Environmental Features: Resistance to saline solutions, acids & alkali, corrosive gases and UV.
- Working/Storage Temperature: Ta: -40~60°C / 0°C~60°C.



# Drawings



## Vertical bending



# Datasheet:

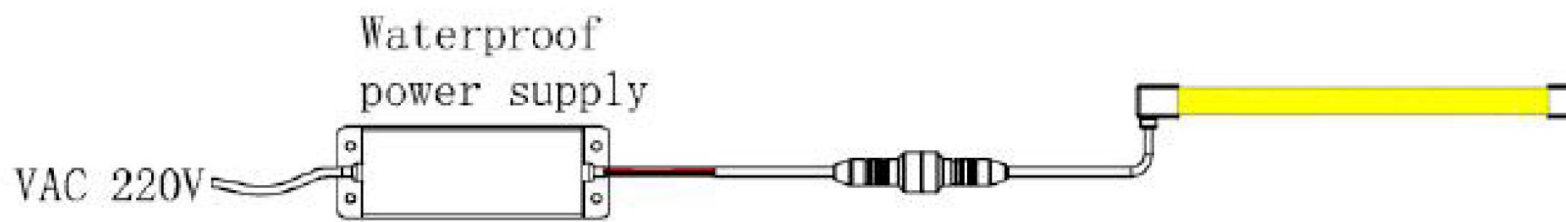
| 12V 6MM NEON LED - 2,5 CM KESİLEBİLİR |                       |                      |                            |                    |              |                 |                             |              |                              |                        |
|---------------------------------------|-----------------------|----------------------|----------------------------|--------------------|--------------|-----------------|-----------------------------|--------------|------------------------------|------------------------|
| KOD<br>Code                           | LED Adeti<br>LED pcs. | LED Tipi<br>LED Type | RENK<br>Color              | GERİLİM<br>Voltage | GÜÇ<br>Power | AKIM<br>Current | IŞIK AKISI<br>Luminous Flux | AÇI<br>Angle | DALGA BOYU<br>Wavelength/CCT | IP Sınıfı<br>IP Rating |
| FNIL.R067.0612                        | 120                   | 2835 SMD             | Kırmızı /RED               | 12V                | 8.5W         | 700 mA          | 45LM                        | 120          | 620-610nm                    | IP67                   |
| FNIL.YG67.0612                        |                       |                      | Altın Sarısı/GOLD          |                    |              |                 | 360LM                       |              | 1800-2000k                   |                        |
| FNIL.B067.0612                        |                       |                      | Mavi/BLUE                  |                    |              |                 | 40LM                        |              | 450-455nm                    |                        |
| FNIL.G067.0612                        |                       |                      | Yeşil/GREEN                |                    |              |                 | 140LM                       |              | 510-515nm                    |                        |
| FNIL.3067.0612                        |                       |                      | 3000K                      |                    |              |                 | 430LM                       |              | 2800-3000K                   |                        |
| FNIL.4067.0612                        |                       |                      | 4000K                      |                    |              |                 | 300LM                       |              | 3800-4000K                   |                        |
| FNIL.6067.0612                        |                       |                      | 6000K                      |                    |              |                 | 440LM                       |              | 5600K-6000K                  |                        |
| FNIL.1067.0612                        |                       |                      | 10.000K                    |                    |              |                 | 360LM                       |              | 10000-30000K                 |                        |
| FNIL.O067.0612                        |                       |                      | Turuncu/ORANGE             |                    |              |                 | 140LM                       |              | 600-610nm                    |                        |
| FNIL.YL67.0612                        |                       |                      | Limon Sarısı/LEMON         |                    |              |                 | 340LM                       |              | 426-430nm                    |                        |
| FNIL.BI67.0612                        |                       |                      | Buz Mavisi/ICE BLUE        |                    |              |                 | 250LM                       |              | 480-485nm                    |                        |
| FNIL.GM67.0612                        |                       |                      | Maldiv Yeşili/MALDIV GREEN |                    |              |                 | 200LM                       |              | 490-495nm                    |                        |
| FNIL.PU67.0612                        |                       |                      | Mor/PURPLE                 |                    |              |                 | 50LM                        |              | 400-435nm                    |                        |
| FNIL.P067.0612                        |                       |                      | Pembe/PINK                 |                    |              |                 | 50LM                        |              | 380-440nm                    |                        |
| FNIL.PL67.0612                        |                       |                      | Açık Pembe/LIGHT PINK      |                    |              |                 | 130LM                       |              | 611nm                        |                        |

## Note:

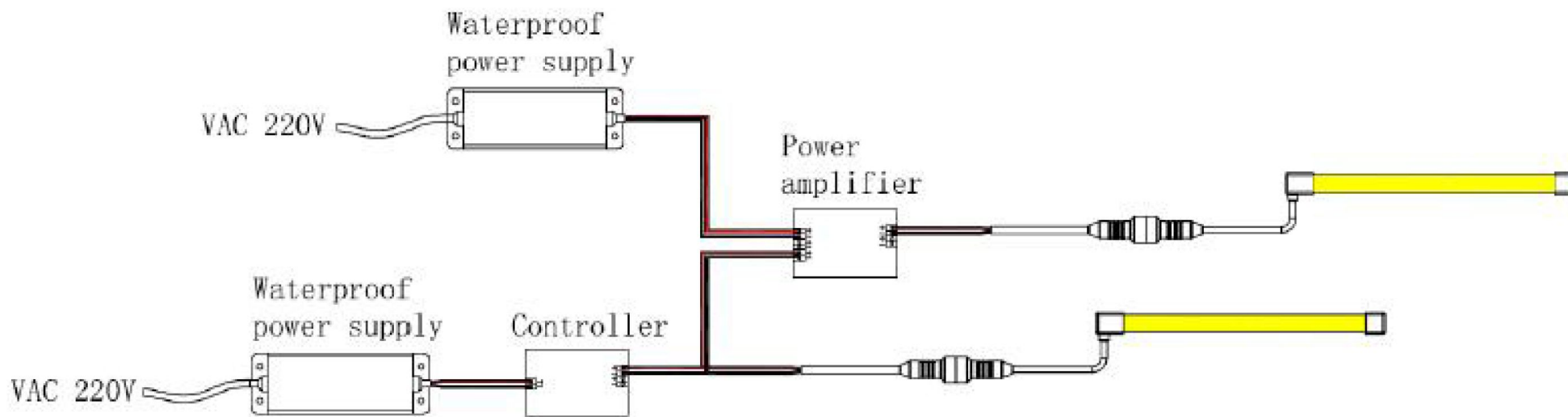
- 1、The above data is the testing result of 1M standard product;
- 2、The power and lumens of output data can be vary up to  $\pm 10\%$ ;
- 3、The above parameters are all typical values;

# Wiring Diagram:

Non-dimming connection mode:



Dimming connection mode:



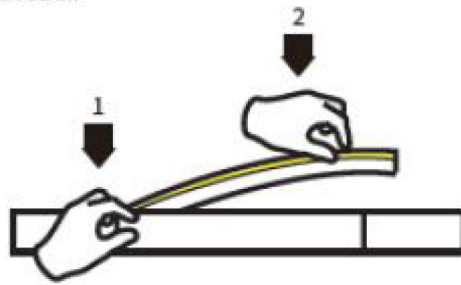
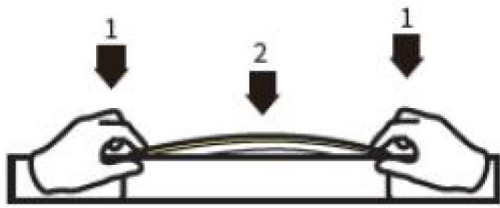
# Packaging Solutions:



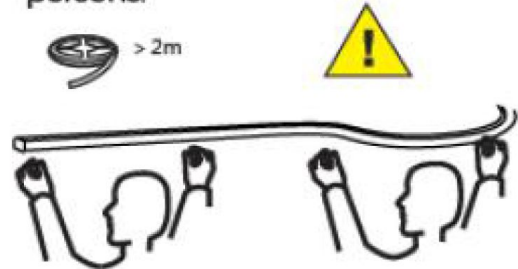
| Model     | Product Dimensions (mm) | Carton size(cm) | N.W.(kg)/PC | G.W.(kg)/P<br>C | Meter/Pcs./CTN |
|-----------|-------------------------|-----------------|-------------|-----------------|----------------|
| FNIL.0612 | 6*12                    | 33*33*11CM      | 4.3KG       | 3.5KG           | 50M/roll       |

# Installation of carrier

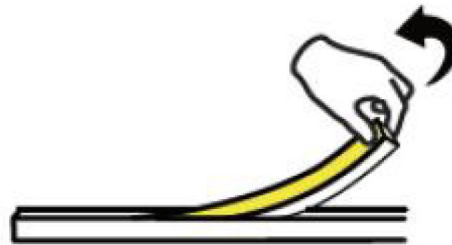
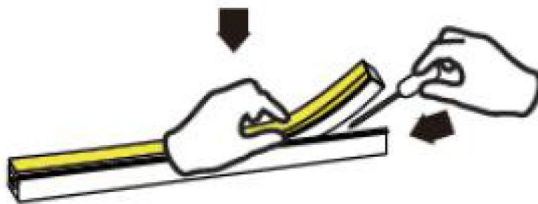
1. When installing the LED strip, install it from both ends at the same time, installation from one direction is prohibited.



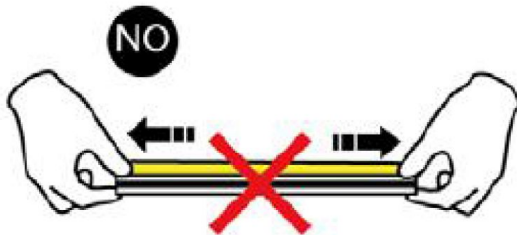
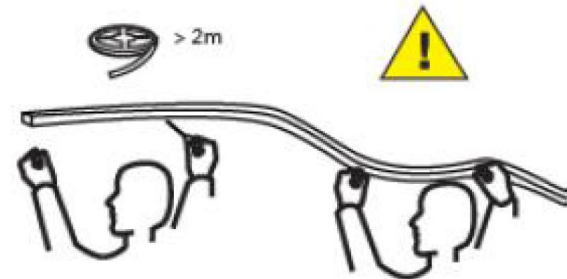
⚠ If the length of LED strip is over 2m, it is recommended to install by two persons.



2. Use tool to disassemble carefully, and do not pull the LED strip directly.



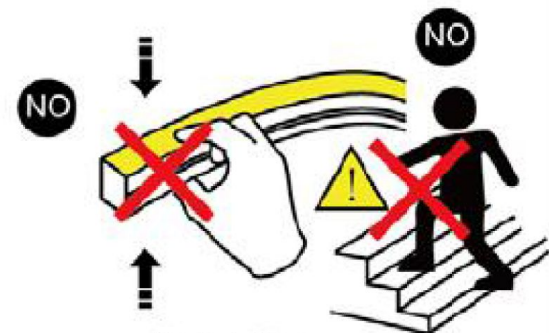
⚠ If the length of LED strip is over 2m, it is recommended to disassemble by two persons.



No stretching



No contorting



No trampling

## Precautions:

- Use a 12V isolated power supply to drive the neon lamp strip and the ripple wave of constant voltage source shall be less than 5%. It is not allowed to use RC voltage reduction or non-isolated power supply to drive the neon lamp strip.
- In actual applications, 20% of the power supply shall be kept (only 80% of the power is used) to guarantee that sufficient voltage is available to drive the product.
- Attention shall be paid to safe operation. After powering on, it is not allowed to touch the AC power supply to avoid an electric shock.
- Attention shall be paid to the positive and negative poles of the wires during installation and whether the power supply conforms to required voltages to avoid damages.
- Avoid scratching, distortion and irregular bending of the product during installation; otherwise it may cause irreparable damage to the product.
- Please do not bend the strip into an arc with a radius less than 60mm to ensure the longevity and reliability, the bending radius too small will damage the product itself.
- If the actual length of application exceeds the specified using length, it will lead to overload heating and uneven brightness.
- To keep the eyes from being harmed, try to avoid staring at the glowing side of the LED strip for a long time.
- Non-professionals are prohibited from installing, disassembling and repairing the product.
- Do not use any acid or alkaline adhesive to fix products (including not limited to glass cement, etc.)
- Product is not suitable for use in swimming pools and fountains.