



FSSG.1019.TW20.1224



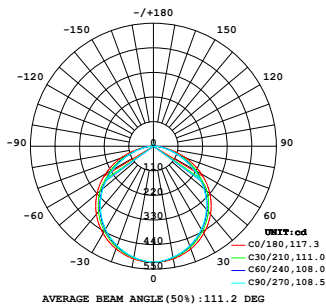
- Can meet different color temperature requirements.
- Integrated package solution for more uniform and consistent light mixing.
- The matched color control system can achieve uniform color temperature and brightness adjustment.

TECHNICAL DETAILS

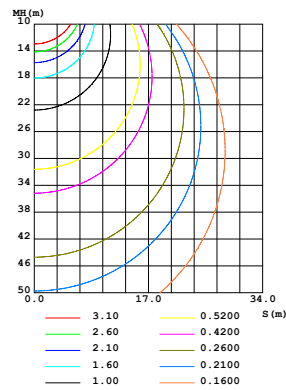
Product No.	FSSG.1019.TW20.1224
Power	19.2W/M
Voltage	DC24V
CRI	80
Led Qty	120LEDs/M
Length/Reel	5M
Working Temperature	-20~50°C
Storage Temperature	-30~80°C

LIGHT DISTRIBUTION

LUMINOUS INTENSITY
DISTRIBUTION DIAGRAM



CO PLANE ISOLUX
DIAGRAM (UNIT:lx)

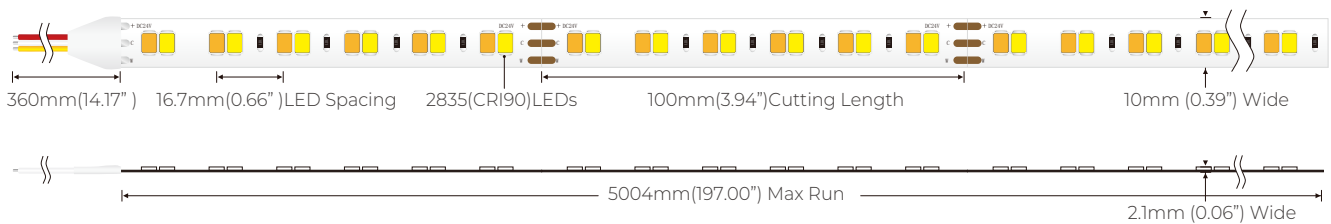


LUMENS PER METER

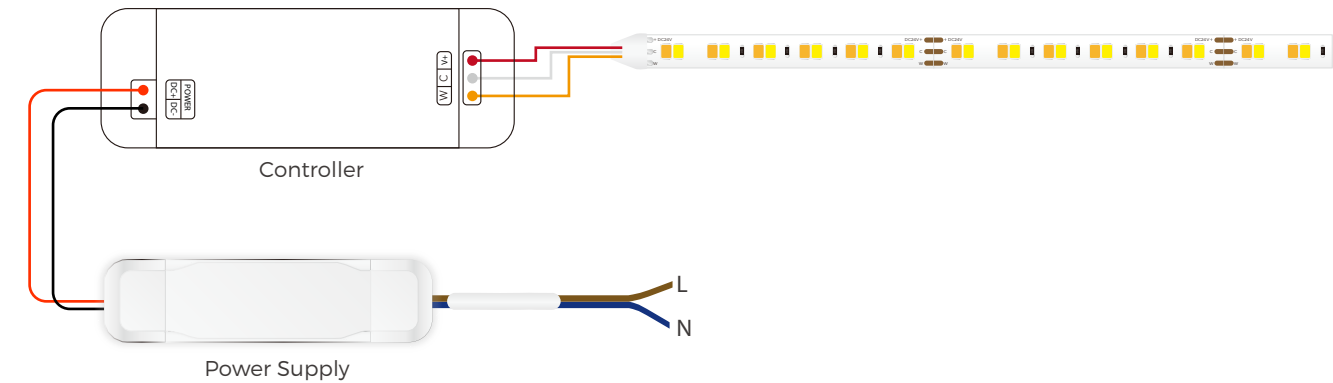
Color Temperature

2700K	1060lm
6500K	1150lm

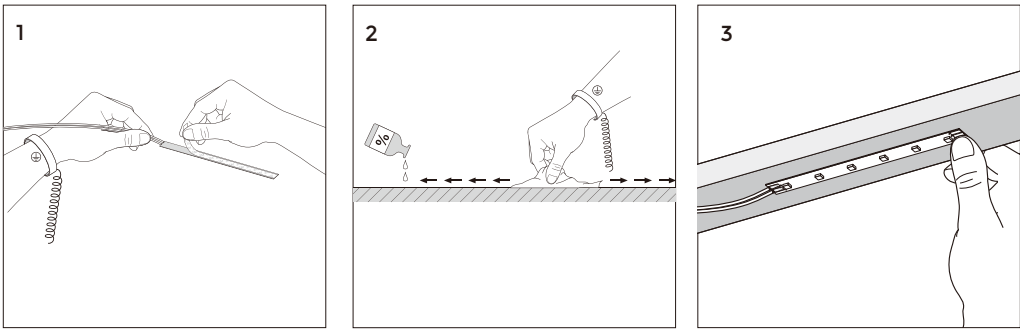
DIMENSION



POWER CONNECTION DIAGRAM

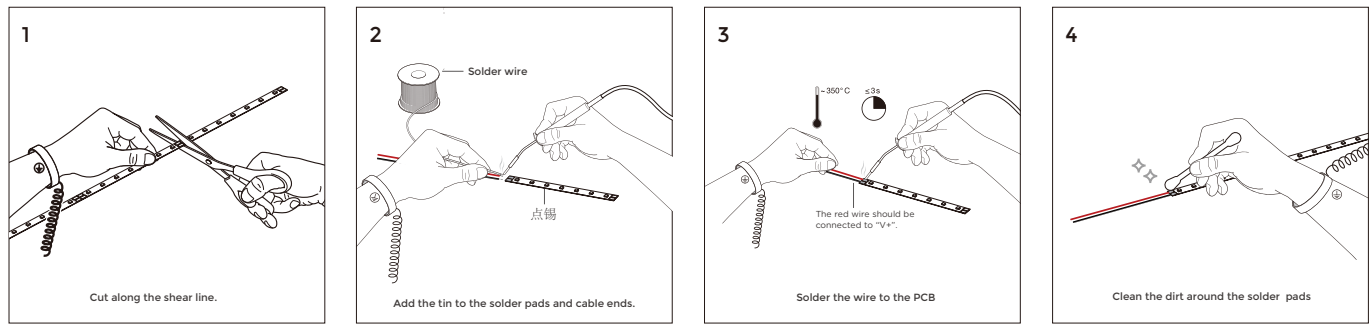


INSTALLATION



Clean the environment part to be attached with a cloth, as shown in Figure 1, and then tear off the 3M tape on the back of the light belt, and finally stick the light belt on the clean place.

CUTTING



PACKING

N.W /CTN(KG)	G.W/CTN(KG)	QTY / CTN(reel)	CTN Size(cm)
-	-	-	-
