



Meat



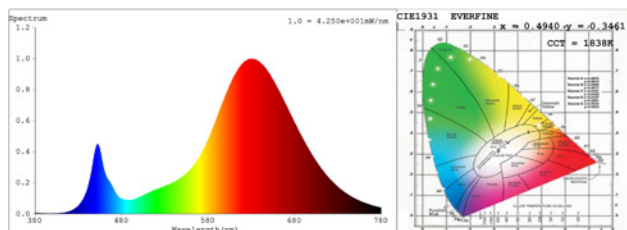
- Ideal for meat lighting to enhance freshness and visual appeal.
- Specifically designed for meat lighting to bring out its natural freshness.
- Perfect for highlighting meat and making it look fresher.

LUMENS PER METER

Color Temperature

| | |
|---------|------------|
| Meat | 1330lm |
| Prpc WL | Ld=603.4nm |
| Peak WL | Lp=630nm |

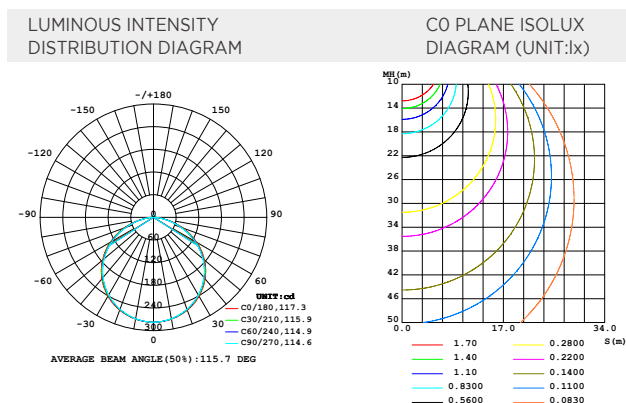
SPECTRUM



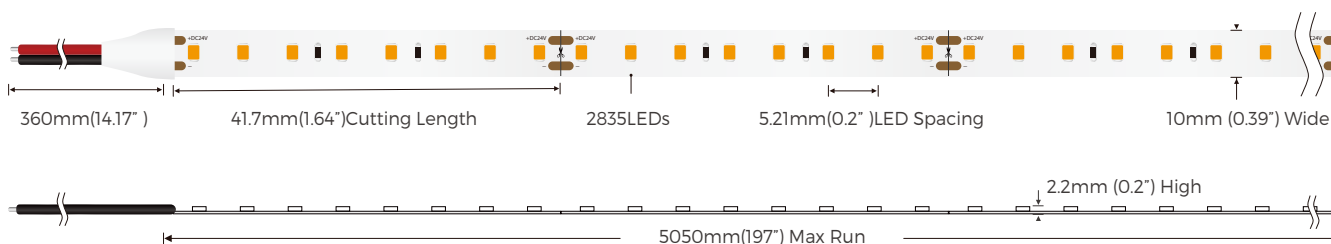
TECHNICAL DETAILS

| | |
|---------------------|---------------------|
| Product No. | FSHW.1014.1820.1924 |
| Power | 14W/M 4.26W/ft |
| Voltage | DC24V |
| CRI | - |
| Led Qty | 192LEDs/M |
| Length/Reel | 5M |
| Working Temperature | -20-50°C |
| Storage Temperature | -30-80°C |

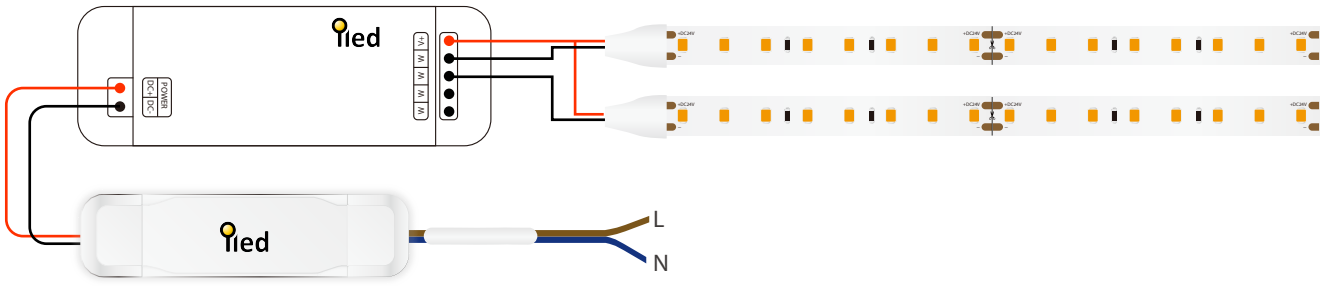
LIGHT DISTRIBUTION



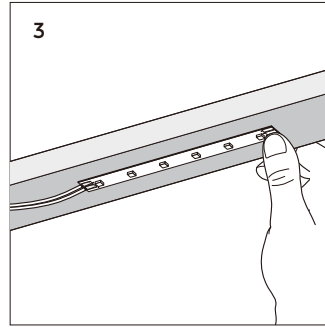
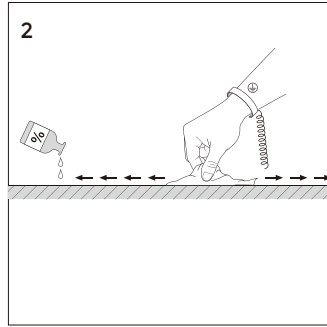
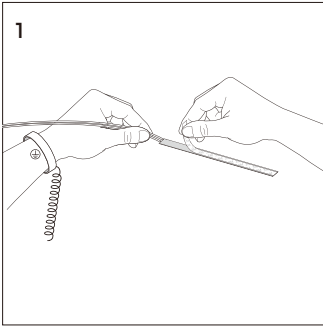
DIMENSION



POWER CONNECTION DIAGRAM

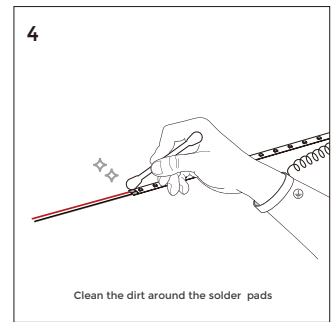
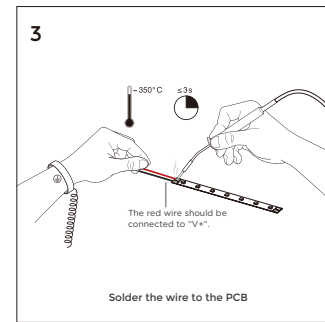
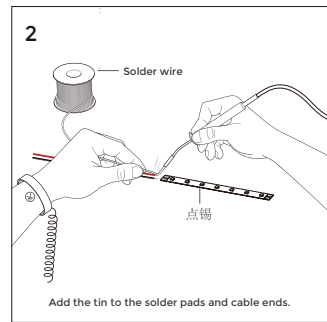
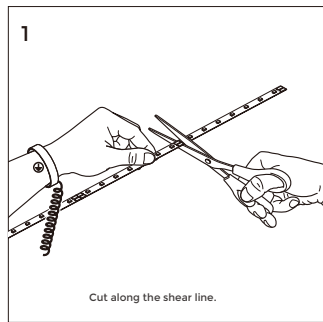


INSTALLATION



Clean the environment part to be attached with a cloth, as shown in Figure 1, and then tear off the 3M tape on the back of the light belt, and finally stick the light belt on the clean place.

CUTTING



PACKING

| N.W /CTN(KG) | G.W/CTN(KG) | QTY / CTN(reel) | CTN Size(cm) |
|--------------|-------------|-----------------|--------------|
| 0.25 | 6.3 | 25 | 500×260×380 |

