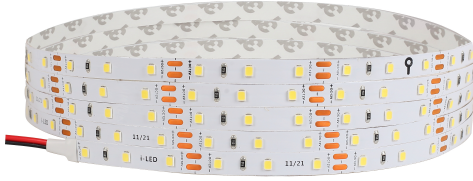


- More stable as no soldering joints



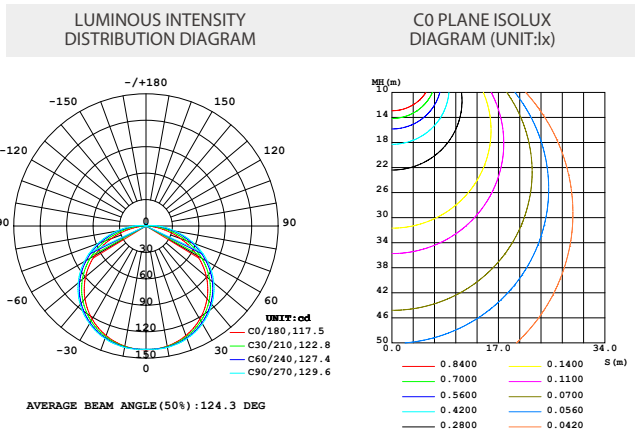
## TECHNICAL DETAILS

Power	4.8W/M
Voltage	DC12V
CRI	80
Led Qty	60LEDs/M
Length/Reel	10M
Working Temperature	-20~50°C
Storage Temperature	-30~80°C



## LIGHT DISTRIBUTION

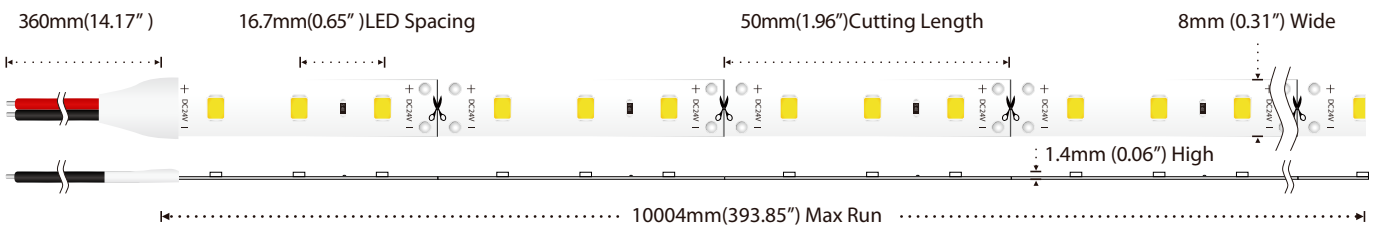
## LUMENS PER METER



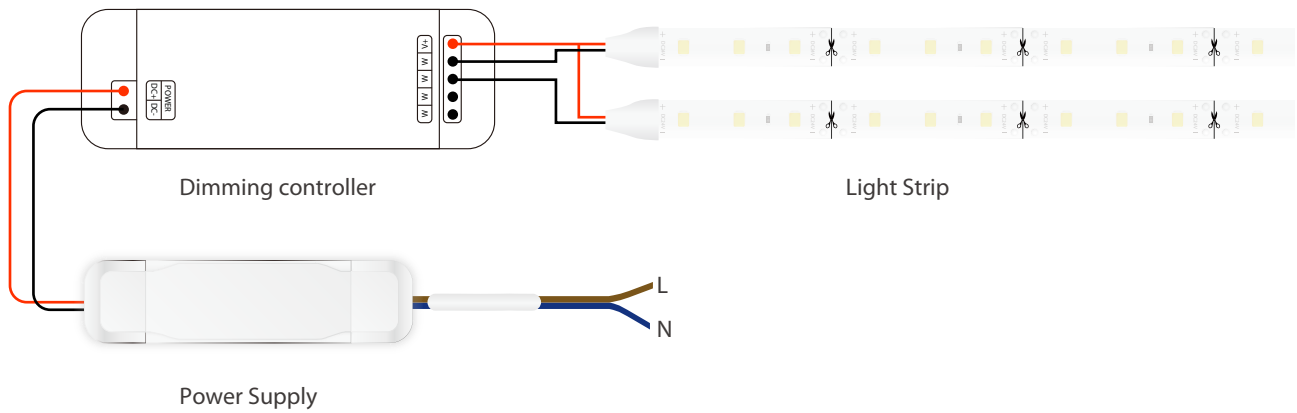
Product No.	FSIU.1148.7020.6012
Color Temperature	7000K - 8000K
	570lm

Product No.	FSIU.1148.B020.6012
Color Temperature	Blue
	98lm

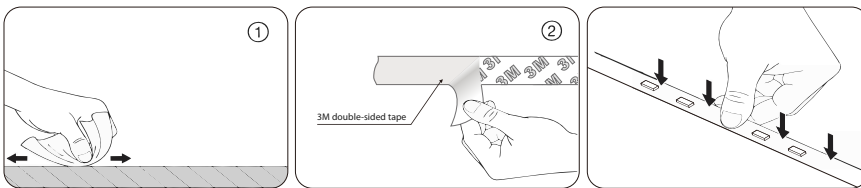
## DIMENSION



## POWER CONNECTION DIAGRAM



## INSTALL



Clean the environment part to be attached with a cloth, as shown in Figure 1, and then tear off the 3M tape on the back of the light belt, and finally stick the light belt on the clean place.

\*Please refer to the installation manual for details

## PACKING

Box dimension(mm)	Carton dimension(mm)	Electrostatic size(mm)	Reel size(mm)	outer box(bags/carton)
500×260×380	360×240×240	240×220	7×12	50
Net weight (kg)	Each box net(kg)	Gross weight of each box(kg)	Bag quantity(bags/carton)	
0.12	5	7.3	25	

